



Approved minutes of the regular meeting of the Council of Commissioners of the Central Québec School Board held on Wednesday, December 14, 2016 at 7:00 p.m. at the Board Office, 2046, chemin St-Louis, Québec (Québec) G1T 1P4.

Present:	Isabel Béland	Parent Commissioner
	Stephen Burke	Chairman
	Heather Clibbon	Commissioner
	Debbie Cornforth	Parent Commissioner
	Sara Downs	Commissioner (videoconference)
	Christian Falle	Parent Commissioner (videoconference)
	Debbie Ford-Caron	Commissioner (videoconference)
	Chantal Guay	Commissioner (videoconference)
	Cameron Lavallee	Parent Commissioner
	Wyna Marois	Commissioner
	Stephen Pigeon	Director General
	Jean Robert	Vice-Chairman (videoconference)
	Jo Rosenhek	Commissioner (videoconference)
	Jo-Ann Toulouse	Commissioner (videoconference)
	Aline Visser	Commissioner
Absent:	Esther Paradis	Commissioner
Other:	Vacant Position	Commissioner, Ward #4
In attendance:	François Garon	Computer Technician
	Sandra W. Griffin	Secretary General
	Yves Lambert	Teacher at Three Rivers Academy, Treasurer of CQTA
	Melanie Simard	Executive Secretary
	Mark Sutherland	Director of Instructional Services

16-12.01 Call to Order

The Chairman called the meeting to order at 7:02 p.m.

16-12.02 Approval of the Agenda

It was MOVED by A. Visser SECONDED by D. Ford-Caron and unanimously RESOLVED; THAT the agenda be approved as circulated.

16-12.03 Public Question Period

No questions were asked.

16-12.04 Question Period for Students

No students were present.

16-12.05 **Correspondence from Students**

No correspondence was received.

16-12.06 **Report from the Student Ombudsman**

Anne Letellier de St-Just came for her report at 7:03 p.m. and left the meeting at 7:09 p.m.

The Student Ombudsman, Ms. Anne Letellier de St-Just noted that this was her fifth report since March 2011 presented to the Council of Commissioners. She reminded everyone about the mandate of a Student Ombudsman and indicated her role as one of a neutral third party who receives and addresses complaints formulated by parents and students who consider themselves victims of an injustice. She is usually called upon once the complainant has exhausted the various avenues available to them by the School Board.

Ms. Anne Letellier de St-Just delivered a report in person stating that she has received a total of 6 complaints for the 2015-2016 school year, dealt with to the satisfaction of all. Two were dealt with the school staff only. Details will be included in the CQSB 2015-2016 Annual Report.

16-12.07 **Approval of the minutes of the regular meeting held on November 16th, 2016**

It was MOVED by S. Downs, SECONDED by J. Robert and RESOLVED; THAT the minutes of the regular meeting of the Council of Commissioners held on Wednesday, November 16th, 2016 be accepted as circulated.

Commissioners W. Marois and H. Clibbon abstained.

16-12.08 **Business arising from the minutes**

It was noted that Sandra Wright Griffin was nominated as Secretary General on November 17th, 2016.

16-12.09 **Report from the Chairman**

The Chairman had sent his report to commissioners that addressed the following:

- Colloque ADIGECS - November 24th, 2016
- RRES-RRHS Ad Hoc Committee Post Mortem Meeting - November 28th, 2016
- Meeting with St. Patrick's / Quebec High School Joint Committee - November 28th, 2016
- *Rencontre nationale sur la Réussite éducative* - December 1st and 2nd, 2016
- LBPSB and EMSB - Special Auditor and UPAC
- CBC RadioOne Breakaway Interview - December 2nd, 2016
- Agenda Meeting - December 6th, 2016
- QESBA Finance Committee - December 7th, 2016
- QESBA Board of Directors - December 9th, 2016

16-12.10 Director General's Report

The Director General formally addressed the Council and provided a report on the following items:

- a) Up-date on Strategic Planning
- b) Christmas Hamper
- c) January 17th and 18th, 2017 Principals Meeting
- d) Labour Relations Committees
 - i) Senior Staff of Service – Directors, Coordinators and Management Staff
 - ii) Senior Staff of Schools and Centre – Principals
 - iii) Teachers
 - iv) Professionals
 - v) Support Staff

16-12.11 New Business

- a) Three-Year Plan for the Destination of Immovables and Deeds of Establishment (adoption)

WHEREAS section 211 of the Education Act stipulates that each school board shall establish a three-year plan for the allocation and destination of its immovables;

WHEREAS section 211 also stipulates that, in accordance with the plan, deeds of establishment are to be issued to each school and centre listed in the plan;

It was MOVED by W. Marois, SECONDED by A. Visser and unanimously RESOLVED; THAT pursuant to section 211 of the Education Act, the Central Québec School Board adopt the three-year plan and the deeds of establishment for its schools and centres for the 2017-2018, 2018-2019 and 2019-2020 school years as in **Appendix 1** to the minutes.

- b) Criteria for the Admission and Enrolment of Students 2017-2018 (adoption)

WHEREAS appropriate consultation on the draft Criteria for the admission and enrolment of students for the 2017-2018 school year has taken place;

WHEREAS section 239 of the Education Act stipulates that the criteria must be adopted, put into force, and sent to each governing board at least 15 days before the beginning of the student enrolment period;

WHEREAS the enrolment period for the 2017-2018 school year will be from February 6th to February 24th, 2017;

It was MOVED by J.-A. Toulouse, SECONDED by J. Rosenhek and unanimously RESOLVED; THAT pursuant to sections 4, 213, and 239 of the Education Act, the Central Québec School Board adopt the Criteria for the admission and enrolment of students for the 2017-2018 school year as in **Appendix 2** to the minutes.

New Business (continued)c) Québec City School Calendar – Youth Sector 2017-2018

WHEREAS section 238 of the Education Act stipulates that every school board shall establish the school calendar of its schools, taking into account the provisions of the basic school regulation;

WHEREAS the teachers' collective agreement provides for a committee that is consulted on the school calendar;

WHEREAS the committee has met and has been consulted on and recommends the adoption of the proposed calendar for the 2017-2018 school year;

It was MOVED by H. Clibbon, SECONDED by D. Cornforth and unanimously RESOLVED; THAT the Central Québec School Board accept the school calendar (Québec City - Youth Sector) for the 2017-2018 school year as in **Appendix 3** to the minutes.

d) Group Consortium – Insurance Liability Portfolio

WHEREAS the liability insurance portfolio obtained through the coming together of school boards located in administrative regions 01, 02, 03, 04, 09, 11, 12 and 17 has proven to be financially advantageous;

WHEREAS it is the opinion of the school boards concerned that this group purchase of services should be maintained for the 2017-2018 school year;

WHEREAS the *Commission scolaire des Appalaches* has agreed to represent the consortium of school boards in its dealings with Guy Turcot, of *Groupe Turcot inc.*;

WHEREAS it is in the interest of the Central Québec School Board to maintain membership in the consortium;

IT was MOVED by A. Visser, SECONDED by S. Downs and unanimously RESOLVED; THAT the Central Québec School Board participate in the consortium of school boards located in administrative regions 01, 02, 03, 04, 09, 11, 12 and 17 for the renewal of its liability insurance for the 2017-2018 school year; and

THAT the School Board mandate the firm of *Groupe Turcot inc.* to enter into negotiation with the firm BFL, insurance broker under the renewal option clause, or to prepare a public call for tenders for the renewal of liability insurance for all the school boards that are part of the consortium; and

THAT the School Board mandate the *Commission scolaire des Appalaches* to carry out the public call for tenders according to that school board's current policies and procedures and accept joint responsibility in this regard; and

New Business (continued)

d) Group Consortium – Insurance Liability Portfolio (continued)

THAT after presentation of the analysis of the tenders by the firm of *Groupe Turcot inc.*, the School Board agree to accept the recommendation resulting from the tender process; and

THAT the Secretary General be authorized to sign all documents pertaining to the insurance policy.

e) Appointment of a Returning Officer

WHEREAS the Commissioner from Ward #4 resigned from his position on November 14, 2016;

WHEREAS a by-election will take place;

WHEREAS article 22 of the Act respecting school elections states that the Director General of the School Board is the returning officer *ex officio*. He may refuse to act as such only with authorization of the Council of Commissioners, who shall, in that case, appoint another person to replace him;

IT was MOVED by W. Marois, SECONDED by D. Ford-Caron and unanimously RESOLVED; THAT the Council of Commissioners of the Central Québec School Board authorize the Director General to not act as returning officer; and

THAT Sandra Wright Griffin be named Returning Officer of the Central Québec School Board for the by-election of ward #4 on the conditions determined by the *Directeur général des élections du Québec*; and

THAT the tariff of remuneration and expenses of electoral personnel be fixed as established in the Act respecting school elections.

f) Purchase of iPads by Mutual Agreement

WHEREAS a significant number of free educational applications are available for iPads;

WHEREAS the Central Québec School Board (CQSB) needs a system that would allow to buy applications without using a personal account. CQSB must be able to deploy the applications from a central location and have the flexibility to revoke said applications from certain tablets so as to install them on others;

WHEREAS iPads are the tablets having attained the most development in this field;

16-12.11

New Business (continued)

f) Purchase of iPads by Mutual Agreement (continued)

WHEREAS the CQSB has already made an important investment in our current fleet of tablets and computer peripherals;

WHEREAS CQSB has already made a significant investment in the training of staff;

WHEREAS CQSB's student learning and competencies are inherently linked to the technologies currently offered by the School Board;

WHEREAS new devices must be compatible in all respects with the equipment already acquired and must meet all CQSB requirements as referred to in article 13.2 of the *Loi sur les contrats des organismes publics (LCOP)*;

WHEREAS CQSB has developed local Information Technology expertise in the area of iPads as well as in the area of pedagogy;

WHEREAS our analysis and assessment of the market indicates that the Apple iPad tablet is the sole device that meets CQSB's needs and enables the Board to maintain homogeneity of its fleet of tablets;

WHEREAS Apple's business model and educational discounts already granted to School Boards are lower than if we would partake in a call for tender. Such an exercise would not serve the public's interest as stipulated in article 13.4 of the *Loi sur les contrats des organismes publics (LCOP)*;

WHEREAS the Ministry has authorized the purchase of tablets without resorting to the *Centre de services partagés du Québec*;

It was MOVED by S. Downs, SECONDED by W. Marois and unanimously RESOLVED; THAT the Central Québec School Board's Council of Commissioners approve the purchase of Apple Canada iPad tablets by Mutual Agreement as this device meets all the requirements of the organization.

16-12.12

Committee Reports

a) Executive Committee

No meeting was held.

b) Parents' Committee

A meeting was held on December 6th, 2016. No report was made.

16-12.12

Committee Reports (continued)

c) Special Needs Advisory Committee

A meeting was to be held on December 12th, 2016 but cancelled due to a snow storm. A meeting will be scheduled in February.

d) Transport Advisory Committee

No meeting was held.

e) Audit Committee

No meeting was held.

f) Evaluation of the Director General

No meeting was held.

g) Ethics and Governance Committee

No meeting was held.

h) Human Resources Committee

No meeting was held.

i) Riverside Schools Ad Hoc Committee - motion to dissolve

WHEREAS on June 13, 2014 the Council of Commissioners formed the Riverside Ad Hoc Committee to assess the various short and long term plans for Riverside Regional Elementary and Secondary schools;

WHEREAS their mandate is now completed;

IT was MOVED by D. Ford-Caron, SECONDED by A. Visser and unanimously RESOLVED; THAT the Riverside Ad Hoc Committee be dissolved.

16-12.13

Quebec English School Boards Association

a) Report from the Board of Directors

No report was made.

b) Reports from Committees

D. Ford-Caron made a detailed report on the various committee meetings.

16-12.14 **Next meeting**

The next regular meeting of the Council of Commissioners will be held on Wednesday, January 18th, 2016.

16-12.15 **Question period**

a) Public

No questions were asked.

b) Commissioners

I. Béland raised questions about the Class Action Suit.

J.-A. Toulouse requested to have an update on the energy efficiency project, Y. Lorange stated that one can be made at the January Council of Commissioners meeting.

16-12.16 **In-camera session**

No in-camera session was held.

16-12.17 **Adjournment**

The meeting was ADJOURNED at 8:05 p.m. on a MOTION by C. Guay, SECONDED by C. Falle.

Sandra Wright Griffin
Secretary General

Stephen Burke
Chairman

Adopted on January 18, 2017.



THREE-YEAR PLAN FOR THE ALLOCATION AND DESTINATION OF IMMOVABLES

2017-2018 / 2018-2019/2019-2020

(Adopted on December 14, 2016)

Building Premises	A.S. Johnson Memorial High School					
Deed of Establishment #:	I					
Address:	919, rue Mooney Ouest, Thetford Mines G6G 6H3					
Level of Instruction Provided:	Secondary: Cycles 1 & 2					
Capacity:	240					
Provisional estimated enrolment	2017-2018:	98	2018-2019:	97	2019-2020:	93
Building Premises	Bishop Mountain School					
Deed of Establishment #:	II					
Address:	2046, chemin St-Louis, Québec G1T 1P4					
Level of Instruction Provided:	Administrative offices					
Capacity:	n/a					
Provisional estimated enrolment	2017-2018:	n/a	2018-2019:	n/a	2019-2020:	n/a
Building Premises	Dollard des Ormeaux School					
Deed of Establishment #:	III					
Address:	18 rue Ladas, Shannon G0A 1R1					
Level of Instruction Provided:	Preschool: 5-year old, Primary: Cycles 1, 2 & 3, Secondary: Cycles 1 & 2					
Capacity:	Primary: 598 & Secondary: 240					
Provisional estimated enrolment	2017-2018:	P 453 S 124	2018-2019:	P 470 S 142	2019-2020:	P 480 S 160
Building Premises	Eastern Québec Learning Centre					
Deed of Establishment #:	IV (a) & IV (b)					
Address:	3005, rue William-Stuart, Québec G1W 1V4					
Level of Instruction Provided:	General Education: Adult (a) Vocational Education (b)					
Capacity:	--					
Provisional estimated enrolment	2017-2018:	-	2018-2019:	-	2019-2020:	-
Building Premises	Everest Elementary School					
Deed of Establishment #:	V					
Address:	2280, Laverdière, Québec G1P 2T3					
Level of Instruction Provided:	Preschool: 5-year olds, Primary: Cycles 1, 2 & 3					
Capacity:	437					
Provisional estimated enrolment	2017-2018:	335	2018-2019:	339	2019-2020:	334
Building Premises	Holland Elementary School					
Deed of Establishment #:	VI					
Address:	940, avenue Ernest Gagnon, Québec G1S 3R2					
Level of Instruction Provided:	Preschool: 5-year olds, Primary: Cycles 1, 2 & 3					
Capacity:	368					
Provisional estimated enrolment	2017-2018:	284	2018-2019:	280	2019-2020:	281

Building Premises	Jimmy Sandy Memorial School			
Deed of Establishment #:	VII (a)			
Address:	1025 Naskapi Road, P.O. Box 5152, Kawawachikamach G0G 2Z0			
Level of Instruction Provided:	Preschool: 4 & 5-year olds, Primary: Cycles 1, 2 & 3, Secondary: Cycles 1 & 2			
Capacity:	Primary: 207 & Secondary: 270			
Provisional estimated enrolment	2017-2018:	2018-2019:	2019-2020:	
	P 155 S 81	P 153 S 80	P 150 S 75	
Building Premises	James Chescappio Memorial Learning Centre			
Deed of Establishment #:	VII (b)			
Address:	104, Nabinacaboo Road, Kawawachikamach (Quebec), G0G 2Z0			
Level of Instruction Provided:	General Education - Adult			
Capacity:	n/a			
Provisional estimated enrolment	2017-2018:	2018-2019:	2019-2020:	
	-	-	-	
Building Premises	La Tuque High School			
Deed of Establishment #:	VIII			
Address:	531, rue St-Maurice, La Tuque G9X 3E9			
Level of Instruction Provided:	Preschool: 4 & 5-year olds, Primary: Cycles 1, 2 & 3, Secondary: Cycles 1 & 2			
Capacity:	Primary: 253 & Secondary: 150			
Provisional estimated enrolment	2017-2018:	2018-2019:	2019-2020:	
	P 106 S 57	P 109 S 56	P 105 S 64	
Building Premises	MacLean Memorial School			
Deed of Establishment #:	IX			
Address:	159 - 5 ^e Avenue, Chibougamau G8P 2E6			
Level of Instruction Provided:	Preschool: 4 & 5-year olds, Primary: Cycles 1, 2 & 3, Secondary: Cycles 1 & 2			
Capacity:	Primary: 207 & Secondary: 210			
Provisional estimated enrolment	2017-2018:	2018-2019:	2019-2020:	
	P 153 S 80	P 152 S 84	P 141 S 98	
Building Premises	Mauricie English Elementary School			
Deed of Establishment #:	X			
Address:	1241, rue Nicolas-Perrot, Trois-Rivières G9A 1C2			
Level of Instruction Provided:	Preschool: 5-year olds, Primary: Cycles 1, 2 & 3			
Capacity:	529			
Provisional estimated enrolment	2017-2018:	2018-2019:	2019-2020:	
	263	272	276	
Building Premises	Portneuf Elementary School			
Deed of Establishment #:	XI			
Address:	35, rue Richard, Cap-Santé G0A 1L0			
Level of Instruction Provided:	Preschool: 5-year olds, Primary: Cycles 1, 2 & 3			
Capacity:	230			
Provisional estimated enrolment	2017-2018:	2018-2019:	2019-2020:	
	134	135	136	
Building Premises	Québec High School			
Deed of Establishment #:	XII			
Address:	945, avenue Belvédère, Québec G1S 3G2			
Level of Instruction Provided:	Secondary: Cycles 1 & 2			
Capacity:	720			
Provisional estimated enrolment	2017-2018:	2018-2019:	2019-2020:	
	421	422	425	
Building Premises	Riverside Regional School			
Deed of Establishment #:	XIII			
Address:	1770, rue Joule, Ville de Saguenay G7S 3B1			
Level of Instruction Provided:	Preschool: 5-year olds, Primary: Cycles 1, 2 & 3, Secondary: Cycles 1 & 2			
Capacity:	Primary: 368, Secondary: 300			
Provisional estimated enrolment	2017-2018:	2018-2019:	2019-2020:	
	P 304 S 124	P 306 S 123	P 301 S 126	



Building Premises	Surplus building		
Deed of Establishment #:	XIV		
Address:	1782, rue Neilson, Ville de Saguenay G7S 3A2		
Level of Instruction Provided:	n/a		
Capacity:	n/a		
Provisional estimated enrolment	2017-2018:	2018-2019:	2019-2020:
	-	-	-
Building Premises	St. Patrick Elementary School		
Deed of Establishment #:	XV		
Address:	919, rue Mooney Ouest, Thetford Mines G6G 6H3		
Level of Instruction Provided:	Preschool: 5-year olds, Primary: Cycles 1, 2 & 3		
Capacity:	253		
Provisional estimated enrolment	2017-2018:	2018-2019:	2019-2020:
	155	167	179
Building Premises	St. Patrick's High School		
Deed of Establishment #:	XVI		
Address:	75, rue de Maisonneuve, Québec G1R 2C4		
Level of Instruction Provided:	Secondary: Cycles 1 & 2		
Capacity:	870		
Provisional estimated enrolment	2017-2018:	2018-2019:	2019-2020:
	522	521	521
Building Premises	St. Vincent School		
Deed of Establishment #:	XVII		
Address:	995, avenue Wolfe, Québec G1V 3J9		
Level of Instruction Provided:	Preschool: 5-year olds, Primary: Cycles 1, 2 & 3		
Capacity:	575		
Provisional estimated enrolment	2017-2018:	2018-2019:	2019-2020:
	480	482	475
Building Premises	Ste-Foy Elementary School		
Deed of Establishment #:	XVIII		
Address:	1240, rue Julien-Green, Québec G1W 3M1		
Level of Instruction Provided:	Preschool: 5-year olds, Primary: Cycles 1, 2 & 3		
Capacity:	299		
Provisional estimated enrolment	2017-2018:	2018-2019:	2019-2020:
	190	191	185
Building Premises	Shawinigan High School		
Deed of Establishment #:	XIX		
Address:	1125, avenue des Cèdres, Shawinigan G9N 1P7		
Level of Instruction Provided:	Preschool: 5-year olds, Primary: Cycles 1, 2 & 3, Secondary: Cycles 1 & 2		
Capacity:	Primary: 207 & Secondary: 240		
Provisional estimated enrolment	2017-2018:	2018-2019:	2019-2020:
	P 141 S 55	P 151 S 59	P 139 S 61
Building Premises	Three Rivers Academy		
Deed of Establishment #:	XX		
Address:	1875, rue Nicolas-Perrot, Trois-Rivières G9A 1C5		
Level of Instruction Provided:	Secondary: Cycles 1 & 2		
Capacity:	420		
Provisional estimated enrolment	2017-2018:	2018-2019:	2019-2020:
	114	111	110
Building Premises	Valcartier Elementary School		
Deed of Establishment #:	XXI		
Address:	1748, boulevard Valcartier, Saint-Gabriel-de-Valcartier G0A 4S0		
Level of Instruction Provided:	Preschool: 5-year olds, Primary: Cycles 1, 2 & 3		
Capacity:	92		
Provisional estimated enrolment	2017-2018:	2018-2019:	2019-2020:
	73	73	71



**DEEDS OF ESTABLISHMENT
2017-2018**

DEED OF ESTABLISHMENT I

Name: A.S. Johnson Memorial High School
Address: 919, rue Mooney Ouest, Thetford Mines G6G 6H3
School Board: Central Québec
Building Code: 881 007
Levels of Instruction: Secondary - Cycles 1 & 2
Language of Instruction: English
Premises The entire building is used for educational purposes

DEED OF ESTABLISHMENT II

Name: Bishop Mountain School
Address: 2046, chemin St-Louis, Québec G1T 1P4
School Board: Central Québec
Building Code: 881 030
Levels of Instruction: Administrative offices
Language of Instruction: n/a
Premises The entire building is used for administrative purposes

DEED OF ESTABLISHMENT III

Name: Dollard des Ormeaux School
Address: 18, rue Ladas, Shannon G0A 1R1
School Board: Central Québec
Building Code: 881 011
Levels of Instruction: Preschool: 5-year olds
Primary: Cycles 1, 2 & 3
Secondary: Cycles 1 & 2
Language of Instruction: English
Premises The entire building is used for educational purposes

DEED OF ESTABLISHMENT IV (a)

Name: Eastern Québec Learning Centre
Address: 3005, rue William-Stuart, Québec G1W 1V4
School Board: Central Québec
Building Code: 881 028
Levels of Instruction: General Education: Adult
Language of Instruction: English
Premises The entire building is used for educational purposes with the exception of the rooms indicated in the shaded areas of the **attached floor plan**

DEED OF ESTABLISHMENT IV (b)

Name: Eastern Québec Learning Centre
Address: 3005, rue William-Stuart, Québec G1W 1V4
School Board: Central Québec
Building Code: 881 028
Levels of Instruction: Vocational Education
Language of Instruction: English
French
Premises The entire building is used for educational purposes with the exception of the rooms indicated in the shaded areas of the **attached floor plan**



DEED OF ESTABLISHMENT V

Name: Everest Elementary School
Address: 2280, Laverdière, Québec G1P 2T3
School Board: Central Québec
Building Code: 881 010
Levels of Instruction: Preschool: 5-year olds
Primary: Cycles 1, 2 & 3
Language of Instruction: English
Premises The entire building is used for educational purposes

DEED OF ESTABLISHMENT VI

Name: Holland Elementary School
Address: 940, avenue Ernest Gagnon, Québec G1S 3R2
School Board: Central Québec
Building Code: 881 004
Levels of Instruction: Preschool: 5-year olds
Primary: Cycles 1, 2 & 3
Language of Instruction: English
Premises The entire building is used for educational purposes

DEED OF ESTABLISHMENT VII (a)

Name: Jimmy Sandy Memorial School
Address: 1025 Naskapi Road, P.O. Box 5152, Kawawachikamach G0G 2Z0
School Board: Central Québec
Building Code: 881 025
Levels of Instruction: Preschool: 4 & 5-year olds
Primary: Cycles 1, 2 & 3
Secondary: Cycles 1 & 2
Language of Instruction: English
Naskapi
Premises The entire building is used for educational purposes

DEED OF ESTABLISHMENT VII (b)

Name: James Chescappio Memorial Learning Centre
Address: 104, Nabainacaboo Road, Kawawachikamach G0G 2Z0
School Board: Central Québec
Building Code: 881B800 (temporary code)
Levels of Instruction: General Education: Adult
Language of Instruction: English
French
Premises The entire building is used for educational purposes

DEED OF ESTABLISHMENT VIII

Name: La Tuque High School
Address: 531, rue St-Maurice, La Tuque G9X 3E9
School Board: Central Québec
Building Code: 881 017
Levels of Instruction: Preschool: 4 & 5-year olds
Primary: Cycles 1, 2 & 3
Secondary: Cycles 1 & 2
Language of Instruction: English
Premises The entire building is used for educational purposes



DEED OF ESTABLISHMENT IX

Name: MacLean Memorial School
Address: 159 - 5^e Avenue, Chibougamau G8P 2E6
School Board: Central Québec
Building Code: 881 021 (Secondary)
881 022 (Primary)
Levels of Instruction: Preschool: 4 & 5-year olds
Primary: Cycles 1, 2 & 3
Secondary: Cycles 1 & 2
Language of Instruction: English
Premises The entire building is used for educational purposes

DEED OF ESTABLISHMENT X

Name: Mauricie English Elementary School
Address: 1241, rue Nicolas-Perrot, Trois-Rivières G9A 1C2
School Board: Central Québec
Building Code: 881 014
Levels of Instruction: Preschool: 5-year olds
Primary: Cycles 1, 2 & 3
Language of Instruction: English
Premises The entire building is used for educational purposes

DEED OF ESTABLISHMENT XI

Name: Portneuf Elementary School
Address: 35, rue Richard, Cap-Santé G0A 1L0
School Board: Central Québec
Building Code: 881 009
Levels of Instruction: Preschool: 5-year olds
Primary: Cycles 1, 2 & 3
Language of Instruction: English
Premises The entire building is used for educational purposes

DEED OF ESTABLISHMENT XII

Name: Québec High School
Address: 945, avenue Belvédère, Québec G1S 3G2
School Board: Central Québec
Building Code: 881 002
Levels of Instruction: Secondary: Cycles 1& 2
Language of Instruction: English
Premises The entire building is used for educational purposes

DEED OF ESTABLISHMENT XIII

Name: Riverside Regional School
Address: 1770, rue Joule, Ville de Saguenay G7S 3B1
School Board: Central Québec
Building Code: 881 018 (Primaire)
881 019 (Secondary)
Levels of Instruction: Preschool: 5-year olds
Primary: Cycles 1, 2 & 3
Secondary: Cycles 1& 2
Language of Instruction: English
Premises The entire building is used for educational purposes



DEED OF ESTABLISHMENT XIV

Name: Surplus building
Address: 1782, rue Neilson, Ville de Saguenay G7S 3A2
School Board: Central Québec
Building Code: 881 020
Levels of Instruction: n/a
Language of Instruction: n/a
Premises n/a

DEED OF ESTABLISHMENT XV

Name: St. Patrick Elementary School
Address: 919, rue Mooney Ouest, Thetford Mines G6G 6H3
School Board: Central Québec
Building Code: 881 007
Levels of Instruction: Preschool: 5-year olds
Primary: Cycles 1, 2 & 3
Language of Instruction: English
Premises The entire building is used for educational purposes

DEED OF ESTABLISHMENT XVI

Name: St. Patrick High School
Address: 75, rue de Maisonneuve, Québec G1R 2C4
School Board: Central Québec
Building Code: 881 005
Levels of Instruction: Secondary: Cycles 1 & 2
Language of Instruction: English
Premises The entire building is used for educational purposes with the exception of the rooms indicated in the shaded areas of the **attached floor plan**

DEED OF ESTABLISHMENT XVII

Name: St. Vincent School
Address: 995, avenue Wolfe, Québec G1V 3J9
School Board: Central Québec
Building Code: 881 001
Levels of Instruction: Preschool: 5-year olds
Primary: Cycles 1, 2 & 3
Language of Instruction: English
Premises The entire building is used for educational purposes

DEED OF ESTABLISHMENT XVIII

Name: Ste-Foy Elementary School
Address: 1240, rue Julien-Green, Québec G1W 3M1
School Board: Central Québec
Building Code: 881 006
Levels of Instruction: Preschool: 5-year olds
Primary: Cycles 1, 2 & 3
Language of Instruction: English
Premises The entire building is used for educational purposes



DEED OF ESTABLISHMENT XIX

Name: Shawinigan High School
Address: 1125, avenue des Cèdres, Shawinigan G9N 1P7
School Board: Central Québec
Building Code: 881 016
Levels of Instruction: Preschool: 5-year olds
Primary: Cycles 1, 2 & 3
Secondary: Cycles 1 & 2
Language of Instruction: English
Premises The entire building is used for educational purposes

DEED OF ESTABLISHMENT XX

Name: Three Rivers Academy
Address: 1875, rue Nicolas-Perrot, Trois-Rivières G9A 1C5
School Board: Central Québec
Building Code: 881 015
Levels of Instruction: Secondary: Cycles 1 & 2
Language of Instruction: English
Premises The entire building is used for educational purposes

DEED OF ESTABLISHMENT XXI

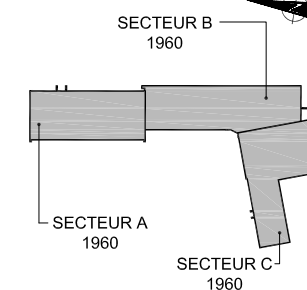
Name: Valcartier Elementary School
Address: 1748, boulevard Valcartier, Saint-Gabriel-de-Valcartier G0A 4S0
School Board: Central Québec
Building Code: 881 008
Levels of Instruction: Preschool: 5-year olds
Primary: Cycles 1, 2 & 3
Language of Instruction: English
Premises The entire building is used for educational purposes





COMMISSION
SCOLAIRE CENTRAL
QUÉBEC
CENTRAL
QUÉBEC SCHOOL
BOARD

PLAN CLÉ



LÉGENDE

NOM DU BÂTIMENT

CENTRE DE FORMATION
EASTERN QUÉBEC

CODE DE BÂTISSSE

028

ADRESSE

3005, rue William-Stuart
Québec
G1W 1V4

TITRE DU DESSIN

NIVEAU

NIVEAU SS

ÉCHELLE

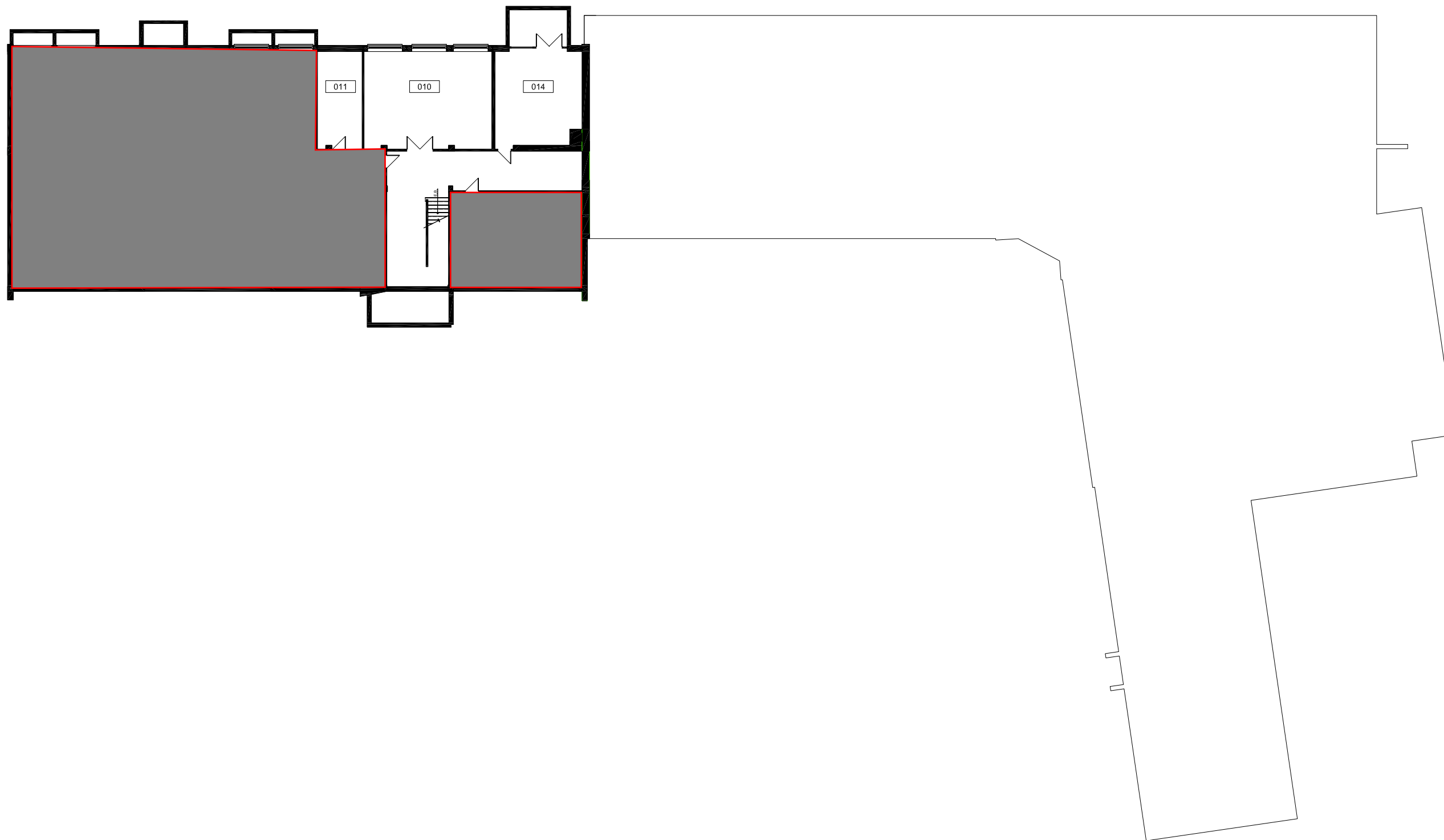
AUCUNE

PAR

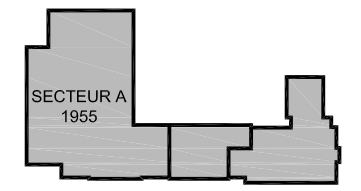
AMB

DATE

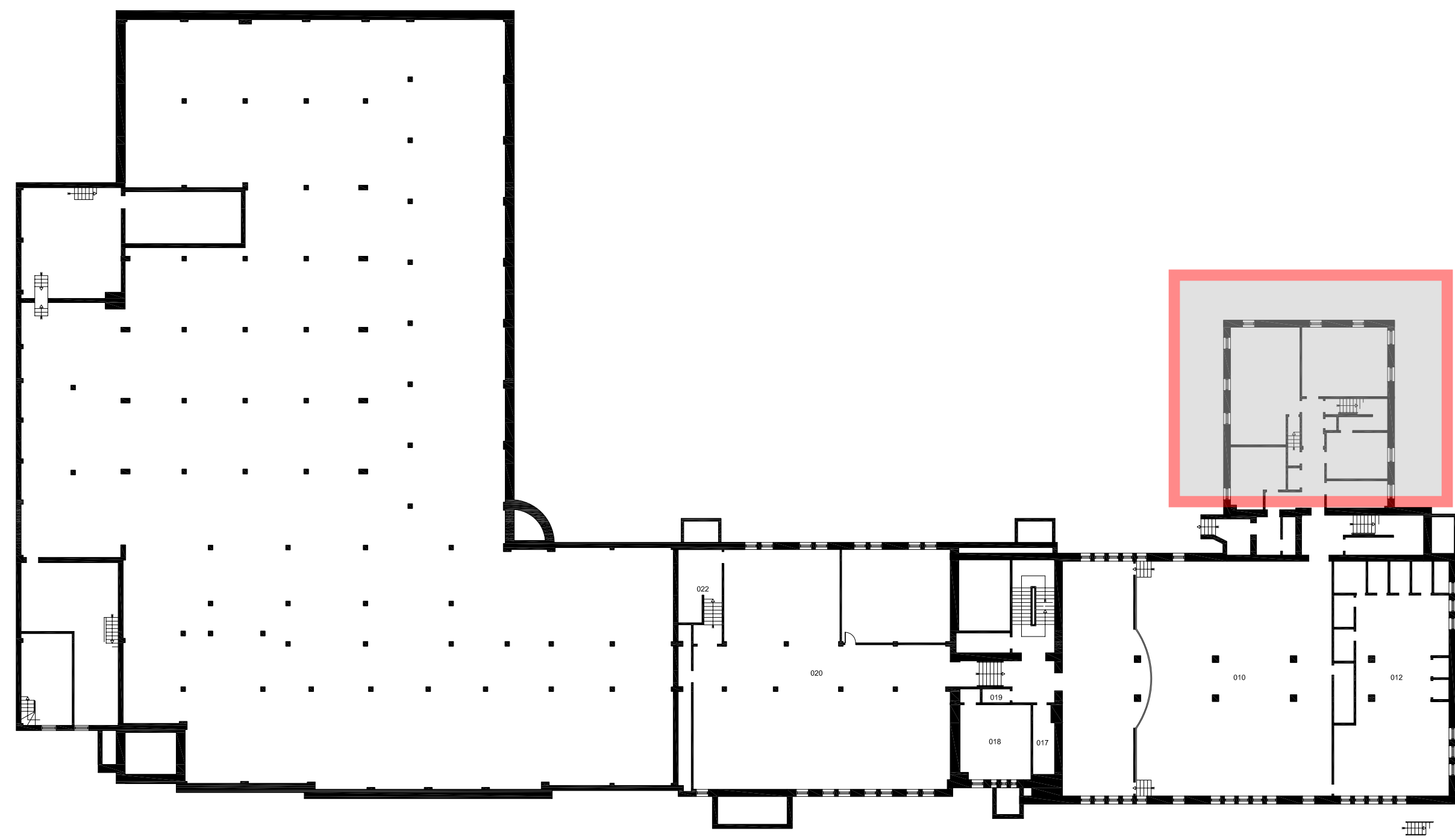
MARS 2009



PLAN CLÉ



LÉGENDE



NOM DU BÂTIMENT
**ÉCOLE
ST-PATRICK**

CODE DE BÂTISSE
005

ADRESSE
**75, rue de Maisonneuve
Québec
G1R 2C4**

TITRE DU DESSIN

NIVEAU
NIVEAU SS

ÉCHELLE AUCUNE	PAR AMB
--------------------------	-------------------

DATE AOÛT 2006	
--------------------------	--



COMMISSION SCOLAIRE CENTRAL QUÉBEC
CENTRAL QUÉBEC SCHOOL BOARD

**CRITERIA FOR THE ADMISSION AND ENROLMENT
OF STUDENTS AND THE APPLICATION OF
SCHOOL BOUNDARIES - 2017-2018 SCHOOL YEAR**

(Adopted December 14, 2016)

Note: The masculine gender is used throughout this document for the sake of conciseness and is meant to be inclusive of both genders.

CRITERIA

**THE REGISTRATION PERIOD IS FROM: MONDAY, FEBRUARY 6 TO FRIDAY, FEBRUARY 24, 2017
AT 4:00 P.M.**

1. The elementary and secondary schools under the jurisdiction of the Central Québec School Board will accept requests for admission and enrolment for students who reside on the territory of the School Board and:
 - Have attained the age of admission as defined by the Education Act or who have obtained a derogation of age* requirement prior to their first day of school. Students who have requested a derogation of age requirement but have not received approval from the School Board will not be permitted to attend school;
 - Have been informed by the Ministry of Education that they are eligible for English language education. Students who have not received such notification from the Ministry will not be permitted to attend an English school until notification is obtained;
 - Have provided a copy of all documents required by the School Board.

* School principals, secretaries, professionals or any other personnel dealing with the registration of students are encouraged to read the *Procedures Concerning Requests for a Derogation to the Age of Admission to Preschool and Primary Education*. This document is found on the CQSB Website.

2. Requests for students living on the territory of another school board for the purposes of attending the 4-yr-old Pre-Kindergarten for students in disadvantaged areas, and who have obtained the approval of their school board and the Central Québec School Board prior to registering will also be accepted subject to the clauses listed below. (see 3 b)
3.
 - a) For kindergarten and elementary students wishing to attend La Tuque High, Mauricie English Elementary, Shawinigan High, St. Patrick (Thetford Mines), Portneuf Elementary, Riverside Regional School, and MacLean Memorial Schools, all requests for admission and enrolment meeting the criteria outlined in Section 1 above will be accepted.
 - b) Students attending the four-year-old kindergarten program for students in a region considered as disadvantaged must reside within a postal code that is designated by the Minister as meeting the criteria. Said criteria are linked to the poverty index (ISME). The minimum number of students to establish a class shall be six (6) and the maximum number shall be eighteen (18)*. Funding for this class is determined on an annual basis by the Ministry.
4.
 - a) For secondary level students wishing to attend A.S. Johnson Memorial High, Dollard-des-Ormeaux, La Tuque High, MacLean Memorial, Riverside Regional School, Shawinigan High School and Three Rivers Academy, all requests for admission and enrolment meeting the criteria outlined in Section 1 above will be accepted.
 - b) For secondary level students wishing to attend either Québec High or St. Patrick's High Schools in Québec City, all requests for admission that meet the criteria outlined in Section 1 above will be accepted. Students will be enrolled in a school subject to the following guidelines:



i) Students currently attending Québec High School or St. Patrick's High School

Students who attended either Québec High School or St. Patrick's High School during the 2016-2017 school year may register at the school of their choice for the following year. Requests for registration will be handled through the school that the student attended in 2016-2017.

*subject to changes in the Collective Agreement

ii) Students currently attending another CQSB school

Students who attended a school of the Central Québec School Board other than Québec High School or St. Patrick's High School during the 2016-2017 school year, and who wish to register at either Québec High School or St. Patrick's High School may apply to the school of their choice for Secondary for the following year. Requests for registration will be received through the school that the student attended in 2016-2017.

HOWEVER, all such requests received outside of the registration period will be sent to the Board for placement as per provisions in Section 4, B, iii B. This placement will be subject to approval from the Board depending on available space and resources at Québec High School or St. Patrick's High School.

iii) Students not currently attending a CQSB school

A. All requests for registration of students who meet the criteria in section 1 and who did not attend a Central Québec school during the 2016-2017 school year, including students from private schools or the French Sector, will be received and processed by the school of their choice. Requests must be received prior to 4:00 p.m. on February 24, 2017. Requests that are mailed must be post-marked by mid-night of February 23, 2017.

B. All secondary students whose requests for registration are received after the deadline will be assigned to a school by Educational Services. Assignments will be based on the availability of space at the school. A notification of the confirmation of the school to which the student has been assigned will be given to the parents once the application has been processed by Educational Services.

C. All current CQSB students whose requests are received after the deadline will be subject to the provisions of paragraph B.

D. All requests for registration of students registered in the International Student Program (ISP) who meet the criteria in Section 1 will have their applications processed at the Board and will be assigned to a school by Educational Services.

5. a) Kindergarten and elementary students registering in the Québec City region who meet the criteria outlined in Section 1 will be assigned to a school according to the territorial boundaries or catchment areas as determined by the Council of Commissioners¹: Dollard-des-Ormeaux, Everest Elementary, Holland Elementary, Ste-Foy Elementary, St-Vincent, and Valcartier Elementary Schools.

¹ See Appendix 1 for the description of the catchment areas.



Families with parents having joint custody and whose domiciles are located in two different catchment areas will be required to choose which of the addresses will be ~~is~~ their official address for school placement. The children will attend the school in that catchment area and transportation will be provided to and from the official address only.

b) Requests for cross-boundary transfers, that is, the enrolment of a kindergarten or elementary student in a school other than the school to which he/she is assigned, may be granted for the period of one year only², subject to the following:

i) The granting of the request:

- does not entitle the student to transportation;
- cannot create oversized classes, oversized grade levels or oversized cycles within the chosen school according to maximum sizes;
- does not guarantee that the student will receive the same type of service that is provided at the school to which the student was originally assigned;
- cannot create any additional cost to the School Board;
- will be granted only upon consultation with the school principal.

ii) A written request must be submitted to the principal of the out-going school. This request must be received by no later than May 1 of the preceding school year.

Requests received after the deadline of May 1 will not be considered until after September 1 of the given school year.

The School Board will render a decision and advise parents once the request has been processed by Educational Services.

iii) If spaces are available they will be filled on a first come, first served basis from amongst those who applied as stipulated in 5.b.ii).

iv) Academic and social factors may be taken into consideration when rendering a decision about transfers.

v) For new families registering to the CQSB, and requesting a cross-boundary transfer after the May 1 deadline, requests must come to the school board and they will be dealt with on a case by case basis.

²Those families who were granted a cross-boundary transfer must re-apply for the 2017-2018 school year.

6. The Central Québec School Board recognizes that in the Metropolitan Québec City area, it may be necessary to transfer students from one school to another. This could occur when the educational services, as defined in the Basic School Regulation, needed for a student or group of students, are not offered in one school, but are in another. This could result in the transfer of the student to another school if it is in the best interest for their social, pedagogical, or psychological welfare as determined after an evaluation of the student by the School Board.



7. When the School Board is unable to provide services for a student, it may be necessary to enter into an agreement with another school board, a private school, or an institution under the jurisdiction of another ministry, for the provision of educational services in accordance with sections 213 and 214 of the Education Act.
8. All requests to transfer a student from one Central Québec school to another, within the same region and received after September 30 will be treated on a case by case basis by Educational Services. A decision on the request will be determined after an evaluation by the School Board, taking into account the psychological and/or social considerations of the particular student.



Appendix 1 - Transportation and Enrolment Catchment Areas 2017-2018

1. For students attending the following schools, the territory for transportation purposes is determined by the French school board that provides transportation:

- La Tuque High School
- Shawinigan High School
- Mauricie English Elementary (Trois-Rivières)
- Three Rivers Academy
- St. Patrick Elementary School (Thetford Mines)
- A.S. Johnson Memorial High School (Thetford Mines)*
- Portneuf Elementary School
- Dollard-des-Ormeaux School*
- Riverside Regional School*
- MacLean Memorial School*

≡ The Central Québec School Board organizes pupil transportation for some of the students attending these schools who live on the territory of municipalities where pupil transportation was provided during the 2016-2017 school year in accordance with the School Board's Transport Policy.

2. For students attending the following schools, the territories established for transportation are as indicated below:

- i) **Québec High and St. Patrick's High Schools:** The Metropolitan Québec City area and municipalities on the south shore which fall within the area covered by the yellow bus routes, which were in place during the 2016-2017 school year.
- ii) **Holland Elementary School:** The area covered by Stoneham, Lac-Delage, Lac-Beauport, Château-Richer, L'Ange-Gardien, Ste-Anne-de-Beaupré, Ile d'Orléans, Mont Ste-Anne, Saint-Ferréol-les-Neiges, Boischâtel and Ste-Brigitte-de-Laval, as well as that part of the Ville de Québec starting at a point on the southern boundary of the Ville de Québec due south of the Anse-au Foulon then on a line north through and including the Parc du Bois-de-Coulonge to rue Grand-Allée, then west on a line along the middle of rue Grand-Allée and then boul. Laurier to av. Marguerite-Bourgeois, north on a line behind the dwellings on the west side of av. Marguerite-Bourgeois to boul. René-Lévesque, west on a line along the middle of boul. René-Lévesque to av. Painchaud, north on a line behind the dwellings on the west side of av. Painchaud and then west along the center of rue Hélène-Boulé to rue Pierre-Maufay, north along the middle of rue Pierre-Maufay to ch. Ste-Foy, west along the center of ch. Ste-Foy to rue Émile-Côté, continuing on a line north along the middle of rue Émile-Côté and its extension to autoroute Charest, east along the middle of autoroute Charest to av. St-Sacrement, then north along the middle of av. St-Sacrement to the intersection of boul. Wilfrid-Hamel, and from this point east along the boundary of the arrondissement La Cité (the Rivière St-Charles), to its intersection with the eastern boundary of Arrondissement Limoilou and then north on this boundary to Autoroute Félix-Leclerc, west along the autoroute to 1^{re} Av., north along the middle of 1^{re} Av. then boul. Henri-Bourassa to a point just south of the dwellings along the south side of rue Saint-Aubert, rue de l'Étoile and rue des Anciens-Canadiens and east along this line to the Rivière Des Roches, then on a line north past the sandpit on the east side to a point just north of a line running behind the dwellings on the north side of rue Hector-Bédard and rue du Rebord and following this line west to autoroute Laurentien, then north along the autoroute to the boundary of the Ville de Québec, then west and then south along this boundary to a point just south of rue des



Alisiers, then west to Lac- St-Charles and north through the lake to the boundary of the Ville de Québec, past Lac-Delage on the west side and continuing north and then east on a line to av. Tewkesbury just north of rue Plante, then north on a line behind the dwellings on the east side of av. Tewkesbury to the Rivière Jacques- Cartier to the east of and excluding Tewkesbury.

- iii) **Ste-Foy Elementary School:** Includes a part of the Ville de Québec defined as follows; starting at a point on the southern boundary of the Ville de Québec due south of the Anse-au-Foulon, then on a line north through and including the Parc du Bois-de-Coulonge to rue Grand-Allée, then west on a line along the middle of rue Grand-Allée and then boul. Laurier to av. Marguerite- Bourgeois, north on a line behind the dwellings on the west side of av. Marguerite- Bourgeois to boul. René-Lévesque, west on a line along the middle of boul. René- Levesque to av. Painchaud, north on a line behind the dwellings on the west side of av. Painchaud and then west along the center of rue Hélène-Boulé to rue Pierre-Maufay, north along the middle of rue Pierre-Maufay to ch. Ste-Foy, west along the center of ch. Ste-Foy to rue Émile-Côté, continuing on a line north along the middle of rue Émile-Côté and its extension to autoroute Charest west along the middle of autoroute Charest to autoroute Robert-Bourassa, south down the middle of autoroute Robert-Bourassa to boul. Laurier, west along the middle of boul. Laurier and continuing northwest on autoroute Duplessis to autoroute Charest, west along the middle of autoroute Charest and autoroute Félix- Leclerc to the western boundary of the Ville de Québec and then continuing to boul. Wilfrid-Hamel, then west along the middle of boul. Wilfrid-Hamel and then rte.138 to the western limits of Ville de Saint-Augustin-de-Desmaures and then on a line south to the southern boundary of the Ville de Québec, then east along this boundary to the starting point.
- iv) **St. Vincent School:** The territory on the south shore which falls within the area covered by yellow bus routes which were in place during the 2015 – 2016 school year. On the north shore, all of the Ville de L’Ancienne-Lorette, and a part of the Ville de Québec defined as follows; a part of the Arrondissement Haute St-Charles starting a point on the western boundary of the arrondissement and rte. Ste-Geneviève, then east along a line through the middle of rte Ste-Geneviève, boul. St-Claude, rue Verret, rue Racine, and boul. Bastien to rue Chef- Nicolas-Vincent, then north on a line behind the dwellings on the east side of rue Chef- Nicolas-Vincent and then continuing on a line behind the buildings on the east side of rue George-Cloutier, continuing north along the boundary of Wendake to a point on a line just north of rue de la Rivière Nelson, extending west along this line to a point just east of the dwellings on the east side of boul. Valcartier, north along this line to rue Martineau, then west on a line south of the dwellings on the south side of rue Martineau to the western boundary of the arrondissement and extending into Arrondissement Laurentien to boul. Henri-IV, south along boul. Henri-IV to av. Industrielle, west along the middle of av. Industrielle to boul. Pie XI, south along the middle of boul. Pie XI to av. de la Montagne, west along a line behind the dwellings situated on the south side of av. de la Montagne to the western boundary of Arrondissement Laurentien, north on that boundary and then west along the northern boundary of Ville de Saint-Augustin-de-Desmaures to its western boundary, then south along that boundary to rte. 138, east along the middle of rte. 138 to autoroute Félix-Leclerc, east along autoroute Félix-Leclerc to autoroute Duplessis, south along autoroute Duplessis to the intersection with boul. Laurier, continuing east along boul. Laurier to autoroute Robert-Bourassa, then north along autoroute Robert-Bourassa to autoroute Charest and west along autoroute Charest to autoroute Henri-IV, and north along autoroute Henri-IV to rte. Ste-Geneviève, and east along the middle of rte. Ste-Geneviève to the starting point.



- v) **Valcartier Elementary School:** The area covered by the municipalities of Tewkesbury and St-Gabriel- de- Valcartier and in the Arrondissement Haute St-Charles on a line from a point on its northern boundary just behind the residences on the east side of boul. Valcartier south to rue Martineau, then west on a line south of the dwellings on the south side of rue Martineau to the western boundary of the arrondissement, then north along this boundary to the northern boundary of the Ville de Québec.
- vi) **Dollard-des-Ormeaux School (Elementary & High School):** The area covered by the municipalities of Shannon, (including all of Base Valcartier), Fossambault-sur-le-Lac, Sainte-Catherine-de-la-Jacques Cartier and a part of the Ville de Québec, Arrondissement Laurentien, defined as follows; starting at a point situated at the intersection of its northern and eastern boundaries extending south along its eastern boundary to a point intersecting a line extending from behind the dwellings on the south side of rue Martineau in Arrondissement Haute-St-Charles to this boundary, then west into Arrondissement Laurentien to boul. Henri-IV, south along boul. Henri-IV to av. Industrielle, west along the middle of av. Industrielle to boul. Pie XI, south along the middle of boul. Pie XI to av. de la Montagne, west along a line behind the dwellings situated on the south side of av. de la Montagne to the western boundary of Arrondissement Laurentien then north along this boundary to the northern limits of the Ville de Québec.
- vii) **Everest Elementary School:** The Arrondissement Limoilou, and that part of Arrondissement Charlesbourg not included in Holland School territory and the Arrondissement Haute-St-Charles starting in the north east at a point on the boundary with Arrondissement Charlesbourg and a line just south of rue des Alisiers, then west to Lac- St-Charles and north through the lake to the boundary of the Ville de Québec, past Lac-Delage on the west and then north to the Ville de Québec boundary, west along the boundary to a point just east of the dwellings on the east side of boul. Valcartier, south on this line to a point just north of rue de la Rivière Nelson, east to the boundary with Wendake, south along this boundary then on a line behind the dwellings on the east side of rue Georges-Cloutier and then rue Chef- Nicolas-Vincent to boul. Bastien, then west on a line through the middle of boul. Bastien, rue Racine, rue Verret, boul. St-Claude and rte. Ste-Geneviève to autoroute Henri-IV and then south along autoroute Henri-IV to autoroute Charest, east along autoroute Charest to av. St-Sacrement , then north along the middle of av. St-Sacrement to the intersection of boul. Wilfrid-Hamel, and from this point east along the boundary of Arrondissement La Cite (the Rivière St-Charles), to the boundary of Arrondissement Limoilou, and then following the boundary of Holland School back to the north east starting point on the boundary of Arrondissements Charlesbourg and Haute St-Charles.

Transportation to the above schools will be provided within the catchment area only and according to the stipulations of the Transport Policy.

N.B. The names of municipalities and sectors that now form part of the new Québec City have been used for purposes of clarity.

3. In exceptional cases, students who are under the jurisdiction of the School Board but who reside off the territory defined for transportation purposes for the school which they are entitled to attend, may receive compensation from the School Board in accordance with the *ministère de l'Éducation et de l'Enseignement supérieur* and School Board budget rules.





ADOPTED ON DECEMBER 14, 2016

CENTRAL QUÉBEC SCHOOL BOARD

2017-2018 SCHOOL CALENDAR

Everest, Holland, St. Vincent, Ste-Foy and Valcartier Elementary Schools
Quebec High School and St. Patrick's High School

AUGUST 2017							SEPTEMBER 2017							OCTOBER 2017						
S	M	T	W	T	F	S	S	M	T	W	T	F	S	S	M	T	W	T	F	S
		1	2	3	4	5						1	2	1	2	3	4	5	6	7
6	7	8	9	10	11	12	3	4	5	6	7	8	9	8	9	10	11	12	13	14
13	14	15	16	17	18	19	10	11	12	13	14	15	16	15	16	17	18	19	20	21
20	21	22	23	24	25	26	17	18	19	20	21	22	23	22	23	24	25	26	27	28
27	28	29	30	31			24	25	26	27	28	29	30	29	30	31				
							31													
NOVEMBER 2017							DECEMBER 2017							JANUARY 2018						
S	M	T	W	T	F	S	S	M	T	W	T	F	S	S	M	T	W	T	F	S
			1	2	3	4						1	2		1	2	3	4	5	6
5	6	7	8	9	10	11	3	4	5	6	7	8	9	7	8	9	10	11	12	13
12	13	14	15	16	17	18	10	11	12	13	14	15	16	14	15	16	17	18	19	20
19	20	21	22	23	24	25	17	18	19	20	21	22	23	21	22	23	24	25	26	27
26	27	28	29	30			24	25	26	27	28	29	30	28	29	30	31			
							31													
FEBRUARY 2018							MARCH 2018							APRIL 2018						
S	M	T	W	T	F	S	S	M	T	W	T	F	S	S	M	T	W	T	F	S
				1	2	3					1	2	3	1	2	3	4	5	6	7
4	5	6	7	8	9	10	4	5	6	7	8	9	10	8	9	10	11	12	13	14
11	12	13	14	15	16	17	11	12	13	14	15	16	17	15	16	17	18	19	20	21
18	19	20	21	22	23	24	18	19	20	21	22	23	24	22	23	24	25	26	27	28
25	26	27	28				25	26	27	28	29	30	31	29	30					
MAY 2018							JUNE 2018							KEY						
S	M	T	W	T	F	S	S	M	T	W	T	F	S							
		1	2	3	4	5						1	2		Holidays for students/teachers					17
6	7	8	9	10	11	12	3	4	5	6	7	8	9		Pedagogical Days					16
13	14	15	16	17	18	19	10	11	12	13	14	15	16		Board organized ped days					1
20	21	22	23	24	25	26	17	18	19	20	21	22	23		Snowstorm/emergency closures					3
27	28	29	30	31			24	25	26	27	28	29	30		March break					5
															First day of school: August 30, 2017					
															Last day of school: June 22, 2018					
1 st snow day to be used on January 26, 2018													Number of student days: 180							
2 nd snow day to be used on April 20, 2018													Number of teacher days: 200							